

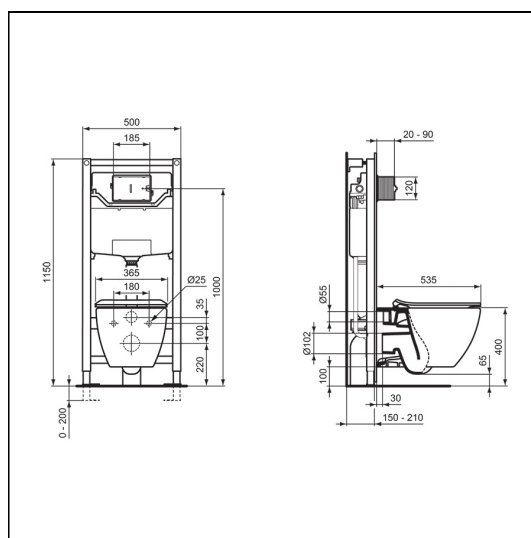
Tesi Wall Hung Toilet

ILLUSTRATED

- T3545** Tesi wall toilet bowl with horizontal outlet and hidden fixations
- T3527** Tesi toilet seat and cover, slim with quick release, slow close
- R0115** Oleas M1 mechanical dual flushplate Ideal Standard - white
- R0153** ProSys 1150mm height, mechanical wall hung WC frame, 120 depth, front actuation

OPTIONS

- R0158** ProSys electronic conversion kit for proximity actuated flushplates (Altes & Symfo) (120 depth frames and cisterns only)
- R0176** Prosys conversion kit (front to top actuation) for mechanical 150 depth frames & cisterns (for when using Oleas flushplates)
- S3643** Conceala 2 4.5/3 or 4/2.6 litre cistern, dual flush valve, side supply, internal overflow, alternative height plastic flushbends, no flushplate/button
- E2125** Conceala 2 concealed cistern universal height, side inlet cistern - pneumatic dual flush valve - no flushplate - 6/4 litre flush
- T3528** Tesi toilet seat and cover, slim
- R0116** Oleas P1 pneumatic dual flushplate Ideal Standard - white
- R0121** Oleas M2 mechanical dual flushplate Ideal Standard - white
- R0119** Oleas P2 pneumatic dual flushplate Ideal Standard - white
- R0123** Oleas M3 mechanical dual flushplate Ideal Standard - white
- R0124** Oleas P3 pneumatic dual flushplate Ideal Standard - white
- R0110** Solea P2 pneumatic dual flushplate Ideal Standard - white
- R0130** Altes NT1 electronic (proximity) ceramic dual flushplate Ideal Standard - white
- R0129** Symfo NT1 electronic (proximity) glass dual flushplate Ideal Standard - white
- P0109** Septa Pro XS pneumatic push button no logo - chrome
- R0184** Septa Pro XS pneumatic push button, no logo
- R0100** ProSys half frame for wall hung WC pans (no cistern)
- R0313** ProSys 1150mm height, pneumatic wall hung WC frame, 120 depth, front actuation
- R0140** ProSys 820mm height, mechanical wall hung WC frame, 150 depth, front or top actuation
- R0312** ProSys 820mm height, pneumatic wall hung wc frame 150 depth, front or top actuation
- R0314** ProSys 1150mm height, freestanding mechanical wall hung WC frame, front actuation
- E0060** Support frame with bolts for wall mounted toilet bowls



FEATURES



ILLUSTRATED PRODUCT DETAILS

Weights

T3545 22.00 KG

Finishes

E: info@idealspec.co.uk | T: 0870 122 8822 | F: 0870 122 8282 | www.idealspec.co.uk

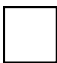
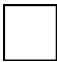

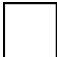
Ideal Standard (UK) Ltd. makes every effort to ensure that the information provided on its website is accurate. However, we cannot guarantee this, and accept no liability for any information or advice given via its website.

Tesi Wall Hung Toilet

T3527 2.20 KG
R0115 0.34 KG
R0153 12.20 KG

Materials

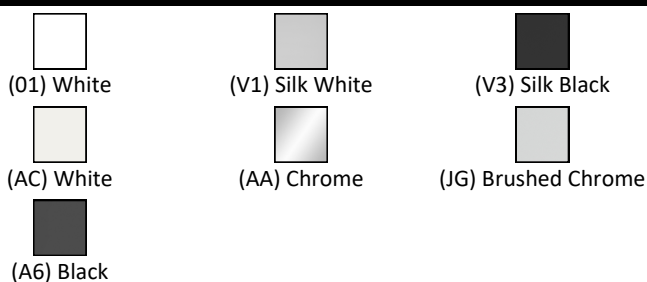
T3545 Vitreous China
T3527 Plastic
R0115 Mixed Material
R0153 Mixed Material

T3545  White (01)
T3527  White (01)
R0115  White (AC)
R0153  Neutral / No Finish (67)

Designer

Robin Levien, RDI

FINISH OPTIONS



Standards

WC bowl to BS EN 997 & BS EN 33

Special Notes

Fix the E0060 support brackets to the floor within the duct and secure the WC with bolts (supplied) and hidden fixing set provided. Screw the bolts to the back wall. Can be used with Concept Space, Concept Air and Tempo furniture WC units. The WC bowl should not be installed with lever activated cisterns fitted with a syphon. Oleas, Solea, Altes & Symfo are compatible with Prosys cisterns only. Please see flushplate section for full finish/colour options.